

PORT LOCATION: 12N

PAIR	CONSISTS OF:
FG38-60445-G19	FG38-30694-000
	FG38-30694-000

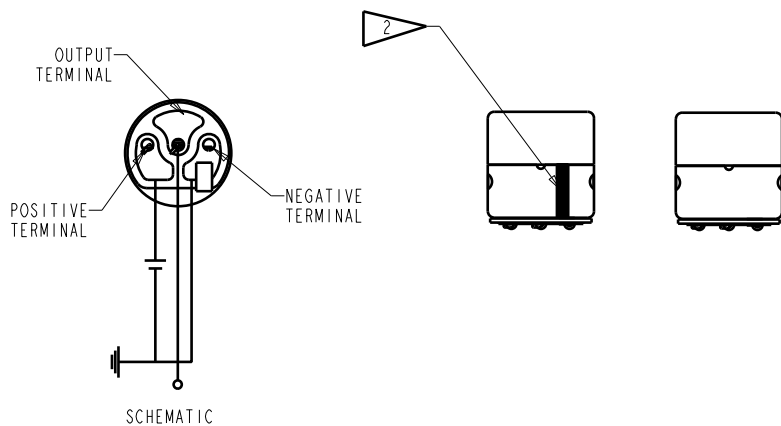
TEST CONDITION					
PARAMETERS	UNIT	MINIMUM	NOMINAL	MAXIMUM	REMARKS
DC POWER SUPPLY	VDC	-	0.93	-	-
DC LOAD	Ohms	-	26K	-	-
AC LOAD	μF	-	1.0	-	-

FREQUENCY	TEST TYPE	RANGE OF DEVIATION BETWEEN MICROPHONES	UNITS
200 Hz	PHASE	2.0 MAX.	DEGREES
500 Hz	SENSITIVITY	1.0 MAX.	dBV
4000 Hz	PHASE	5.0 MAX.	DEGREES

NOTES:

1. SENSITIVITY AND PHASE VALUES INDICATED ON THIS SPECIFICATION ARE VALID AT TYPICAL TEST ENVIRONMENT: 50% RH, 21°C (70°F)

2. GREEN STRIPE INDICATES MICROPHONE WITH LESSER PHASE VALUE AT 200Hz.



Revision	C.O. #	Implementation Date	RELEASE LEVEL	REVISION
B	M10104117	5-23-11	Active	B
A	M10103609	4-7-10		

KNOWLES ELECTRONICS
 ITASCA, ILLINOIS U.S.A.

WHEN TEST LIMITS ARE USED TO ESTABLISH INCOMING INSPECTION ACCEPTANCE/REJECTION CRITERIA, CORRELATION OF TEST EQUIPMENT WITH KNOWLES IS ALSO REQUIRED FOR ELIMINATION OF EQUIPMENT AND TEST METHOD VARIATION		DR. BY	DATE
		LSY	4-7-10
		CK. BY	DATE
		GJP	4-9-10
TITLE:		APP. BY	DATE
MICROPHONE		GJP	4-9-10
PERFORMANCE SPECIFICATION			
FG38-60445-C19			
SHT 2.1			